

GUIDE
DOGS

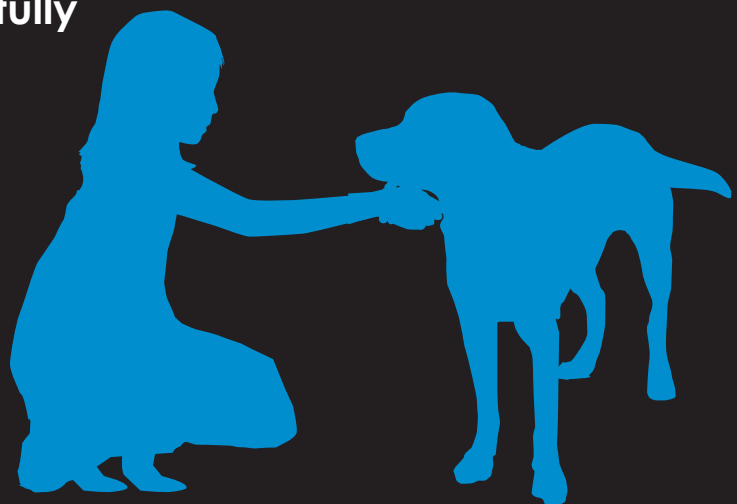


Don't feed a working guide dog!

Guide dogs are not only well trained, they are on carefully balanced diets to keep them healthy.

So please don't feed a guide dog or puppy in training.

Tempting them with titbits encourages them to look for food, not look where they're going!



www.guidedogs.org.uk

Registered charity in England and Wales (209617) and in Scotland (SC038979) 3864 02