

Academic Integrity

Our University promotes academic integrity and educates students about good academic practice throughout their time at Leeds Beckett University. We will investigate students who are suspected to have fallen short of good academic practice and will provide learning opportunities to enable students to avoid future breaches of the regulations.

All tutors should familiarise themselves with the processes for investigating students who have fallen short of good academic practice. To support this, an online staff development module on academic integrity is available via the People Development Website. Other sources of support and guidance will be available via the links below.

Investigatory Processes

There are four categories of investigation for suspected breaches of academic integrity (see below) and investigatory processes are proportionate to the suspected breach.

Category	Type of Offence	Investigatory Process
Category 1	Poor Academic Practice	Local Process
Category 2	Academic Misdemeanour	Local Process
Category 3	Academic Misconduct	Institutional Process (Academic Misconduct Board)
Category 4	Gross Academic Misconduct	Institutional Process (Academic Misconduct Board)

A flowchart illustrating these processes and available penalties for admitted or found cases can be found below. Definitions of offence types are provided in the **Academic Regulations Section 10**.

Timescales for Investigations

Suspected breaches of academic integrity should be dealt with as speedily as possible and a **Service Standard** is in place for investigating suspected cases.

Academic Integrity Leads

Academic Integrity Leads within each School or subject area continue to provide a consistent approach to good academic practice for their School or subject area and provide advice on cases and referrals to the Academic Misconduct Board.

Contacts and further information

Academic Regulations

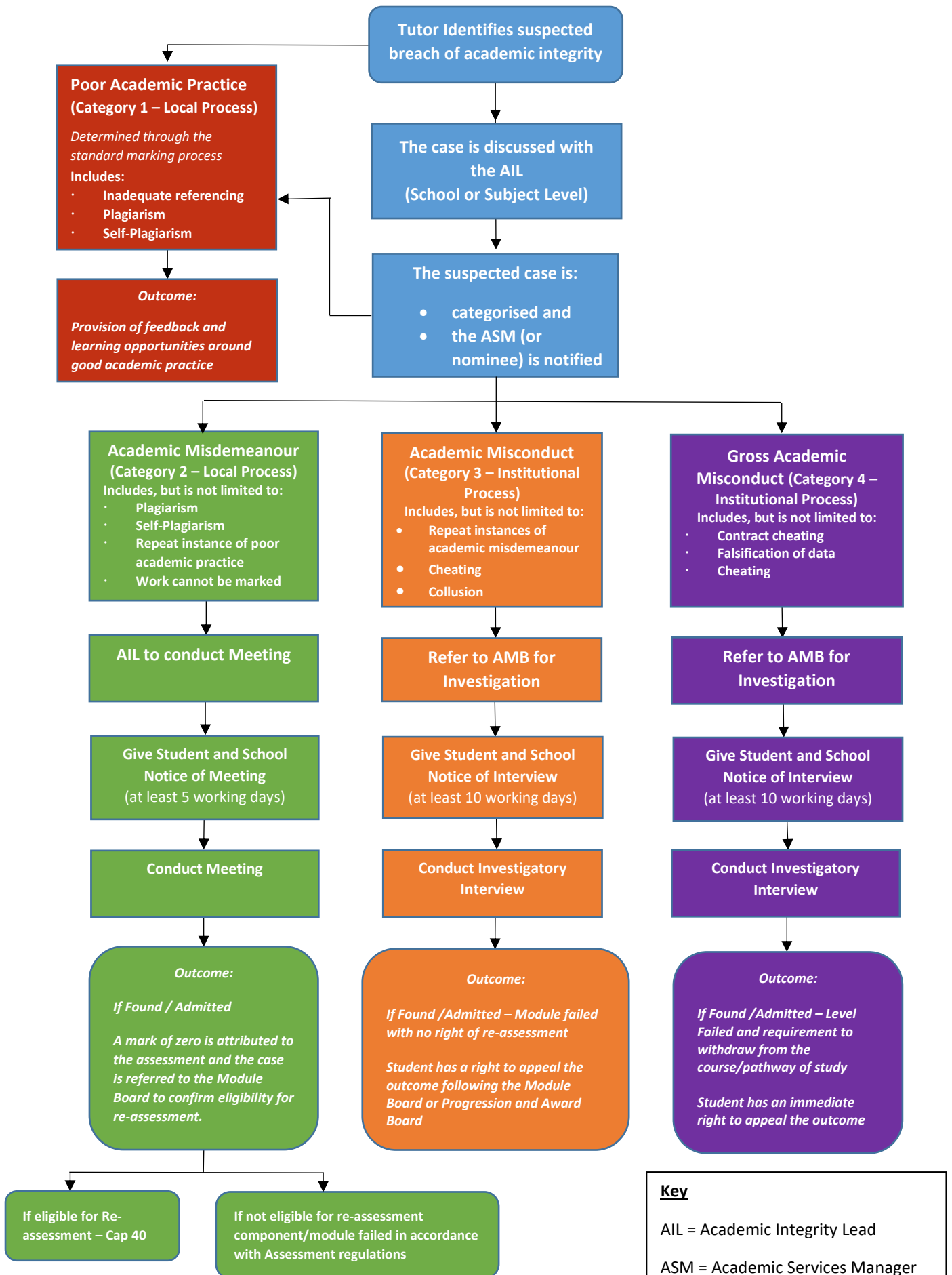
Staff Development

Guidance and
Templates

Quality Assurance
Services

QAS@leedsbeckett.ac.uk

Academic Integrity Processes



N.B. In the event of a finding that no offence has occurred at any stage of these processes, the documentation associated with the allegation shall be shredded/destroyed immediately after the decision is made.

Key
 AIL = Academic Integrity Lead
 ASM = Academic Services Manager
 AMB = Academic Misconduct Board (Institutional Level)