

Recognition of Prior Learning

Did you know that you could be exempt from certain parts of your course if you have previous relevant qualifications or experience?

Recognition of Prior Learning (RPL) allows you to start your course at a point appropriate to the learning and skills that you may have developed elsewhere such as a professional, vocational or community setting or another university. For example, if your prior learning covers the first year of your course, you could start your studies with the second year.

This opportunity applies whether you study at Leeds or with one of our partners.

RPL is considered as part of the admissions process and is therefore reflected in [Section 2 of the Academic Regulations, Admissions.](#)

Key points of RPL:

3 types of RPL:

Recognition of **Experiential** Learning (RPEL)

Recognition of **Certificated** Learning (RPCL)

(UK HE) **Credit Transfer**

You need to study a minimum of one third of the total credit of the target course, or 60 credits - whichever is the higher

Applications are based on your prior learning being mapped against the module or level learning outcomes of the course you'd like to join

Marks are not awarded with RPL, only credit

RPL affects:

- Degree classification
- Student funding (eg PG Loans)
 - Student visas
- Benefits (eg Council Tax exemption)

Prior learning is normally expected to have taken place within the last 5 years

Fees apply to some RPEL applications

RPL may not be awarded against L6 credit of an Honours or Ordinary degree

You don't need to apply for RPL if you're using your experience or other qualifications against the entry requirements

Contacts and further information

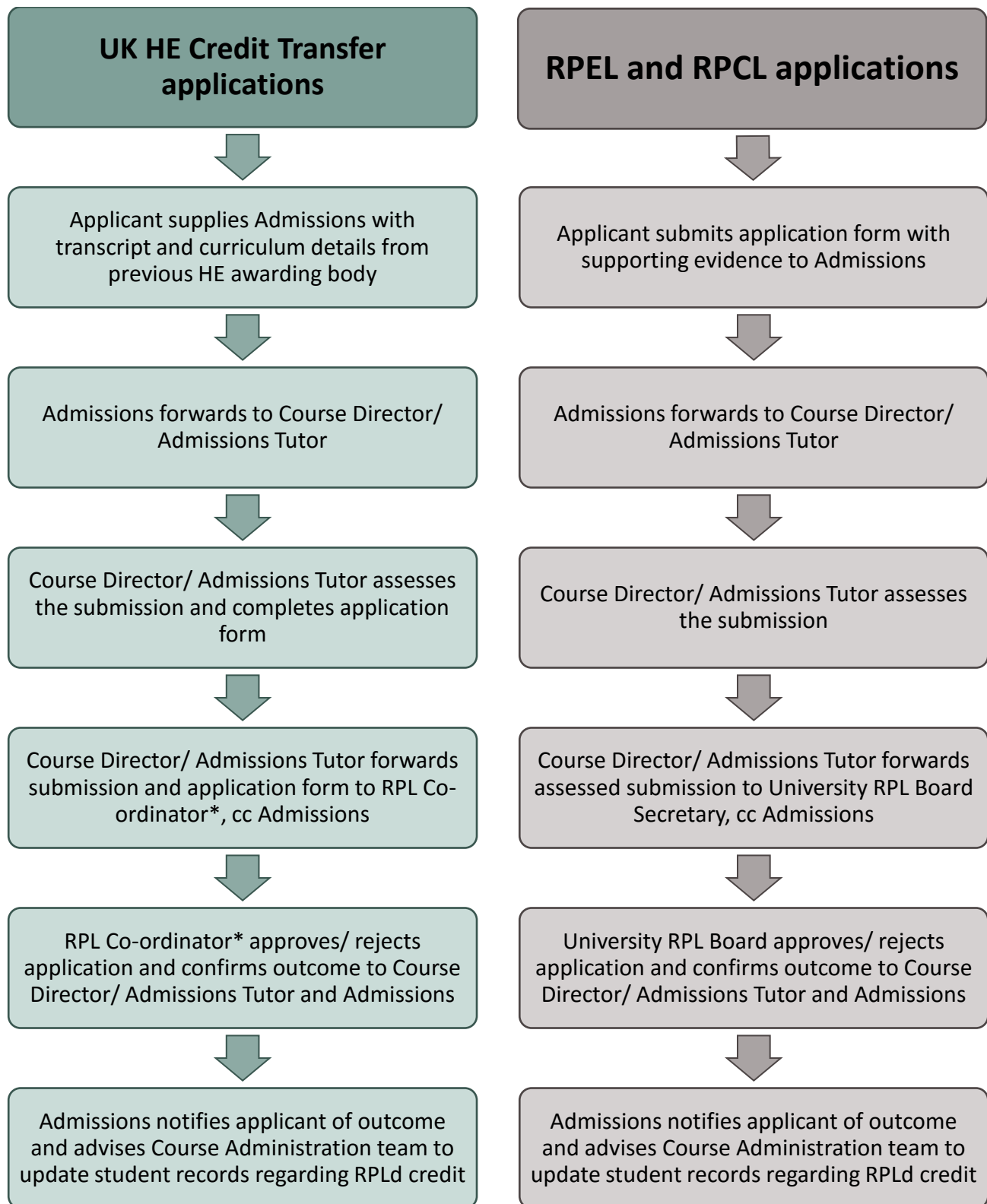
Academic Regulations

Course Director

Admissions Team

Guidance and templates

Recognition of Prior Learning



*RPL Co-ordinator, or the person(s) identified by the Dean of School as being responsible for approval of Credit Transfer