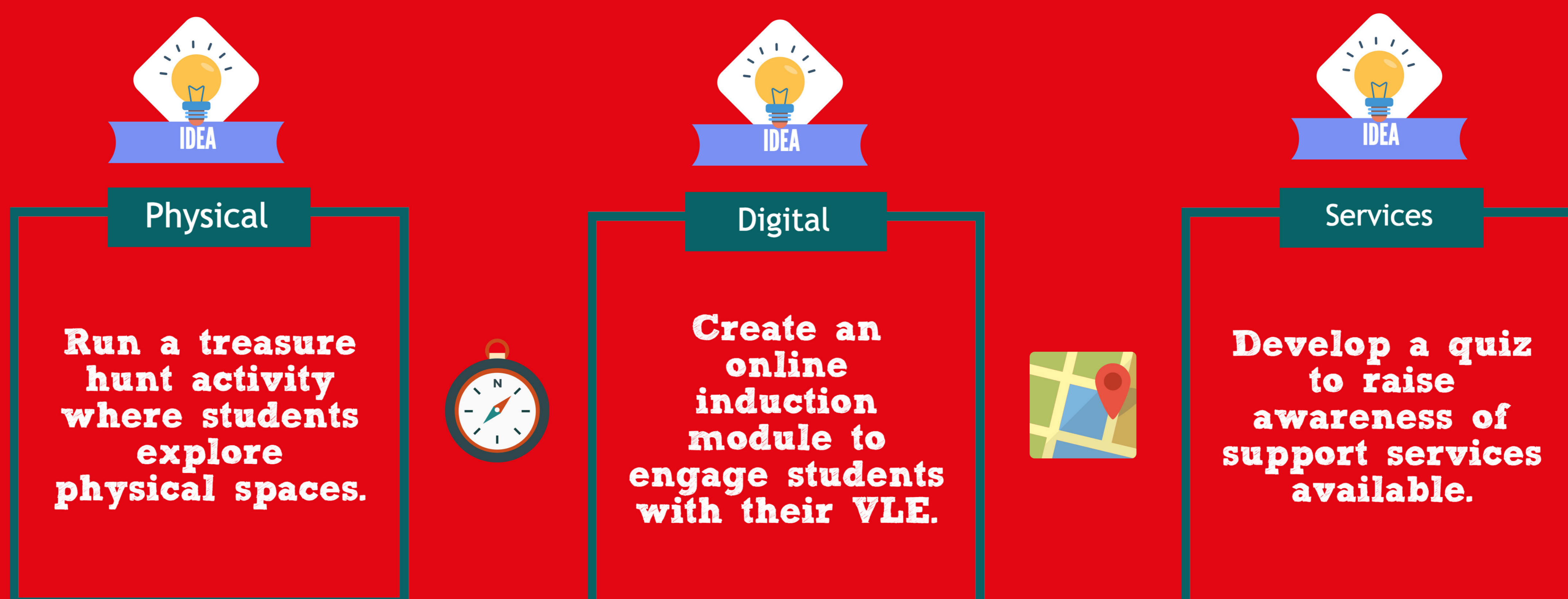


# PROGRESSION



## Practical Orientation

Practical orientation requires students to be able to navigate around their learning environments (physical and virtual). They also need to know when and where to go, and who to contact for classes, development, resources, support and guidance. It's best achieved through clear, proactive, accessible and well-managed support, and through pre-emptive, rapid and targeted interventions.



## Course Orientation

Course orientation requires students to understand what they will be required to do on their course, how they are expected to achieve this, and why. It's about understanding 'the rules of the game'. Course orientation is best achieved through scaffolding new students through a relevant, well-structured, well-organised course, clearly communicating information about resources, and ensuring and explaining transparent, aligned assessment processes.



## Active Participation

A student's active participation in classes, in their course and in university life is a desirable undergraduate attribute. For students to be able to actively participate in their course they need to be both practically orientated (knowing where, when, who) and orientated to the demands of their course (understanding what, how, why). A student is more likely to progress if they actively participate in their course.



### References

CLT (2014) Course Development Principles [Online]. Available from: <https://teachlearn.leedsbeckett.ac.uk/teaching-and-learning-activities/course-design/design-a-new-course/course-development-principles/>

Gibbs, G. (2010) Dimensions of Quality [Online], York. Available from: [https://www.heacademy.ac.uk/system/files/dimensions\\_of\\_quality.pdf](https://www.heacademy.ac.uk/system/files/dimensions_of_quality.pdf)

HEA & NUS (2011) Student Engagement Toolkit [Online]. Available from: <http://www.nusconnect.org.uk/the-student-engagement-partnership-tsep/student-engagement-toolkit>

Leeds Beckett University (2016) Leeds Beckett University Student Charter [Online]. Available from: <http://www.leedsbeckett.ac.uk/assets/studentcharter/>

HEA (2016) Framework for Student Access, Retention, Attainment and Progression in Higher Education | Higher Education Academy [Online]. Available from: <https://www.heacademy.ac.uk/institutions/consultancy/frameworks/retention>



Produced by  
The Centre for  
Learning & Teaching

