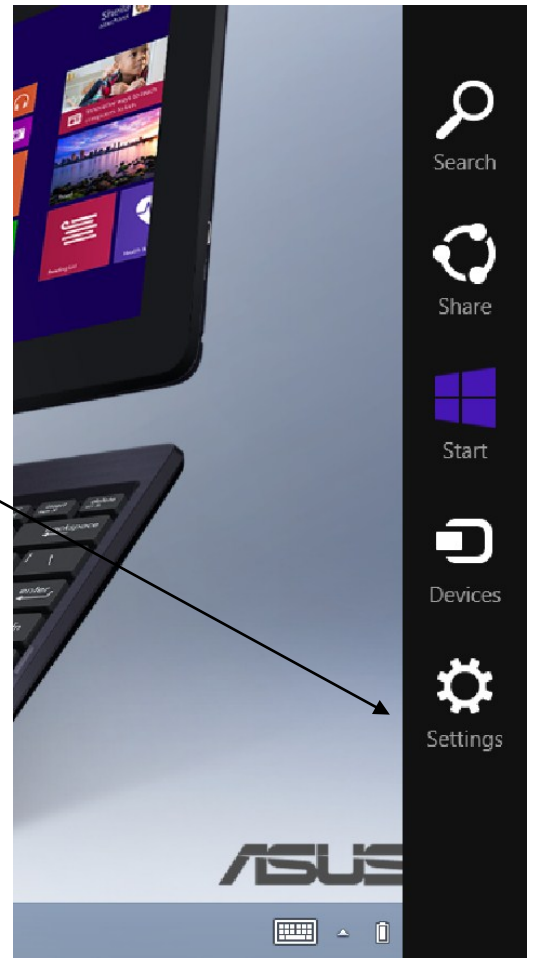
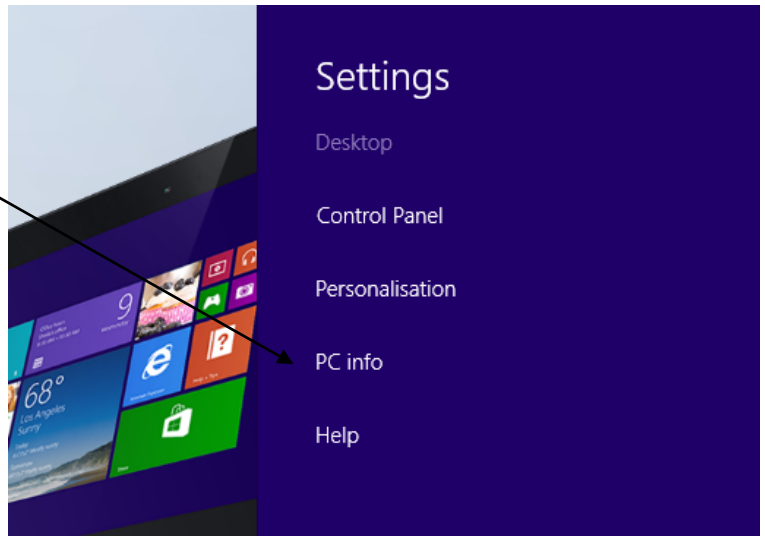


Spec Checks for existing computers: Windows 8

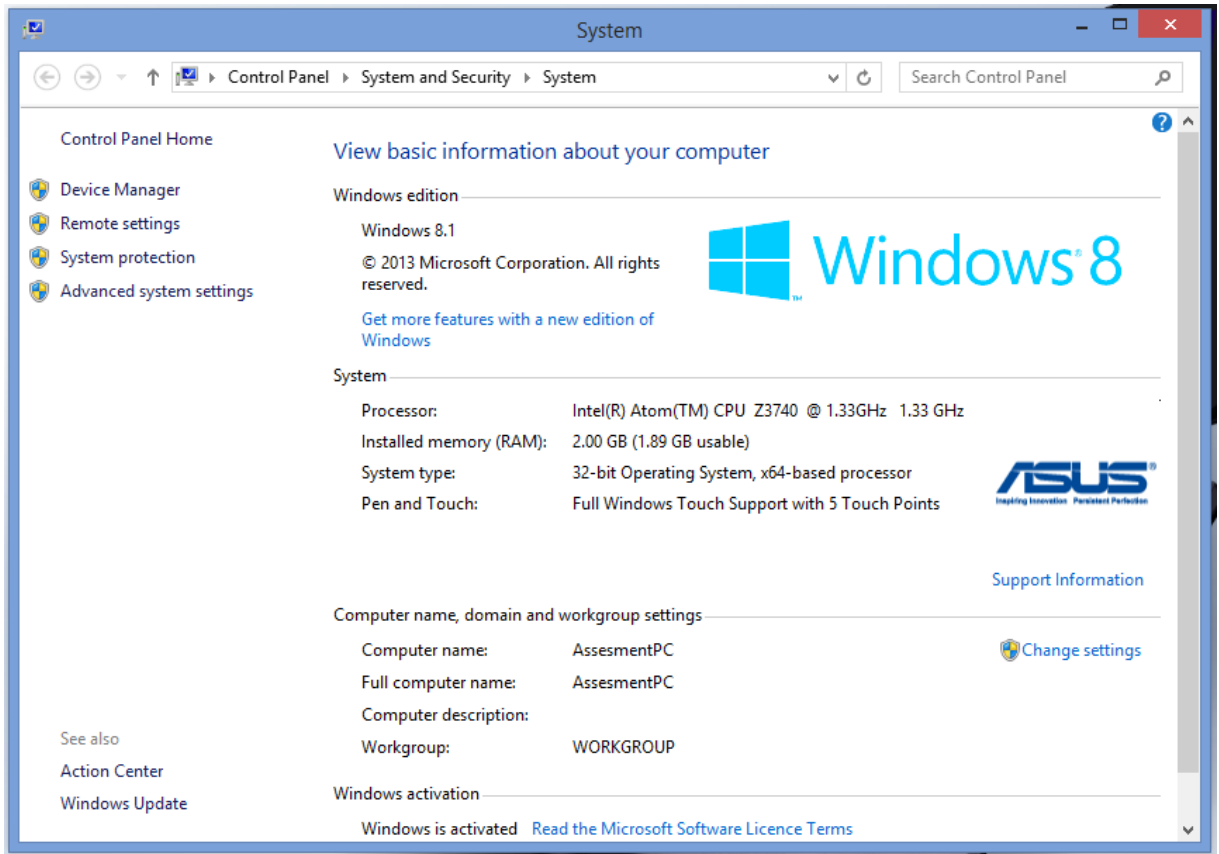
1. 'Swipe' in from the right of the screen to display the 'charms'
2. Select 'settings'



3. Select 'PC info'



4. The system page provides the details of the computer specification. See below:



5. Take a screen shot capturing the system information by pressing the 'Ctrl' and 'PrtScn' buttons at the same time.
6. Paste the image into a word document.
7. Save the file.
8. Attach the file to an email and send to us at: dac@leedsbeckett.ac.uk

