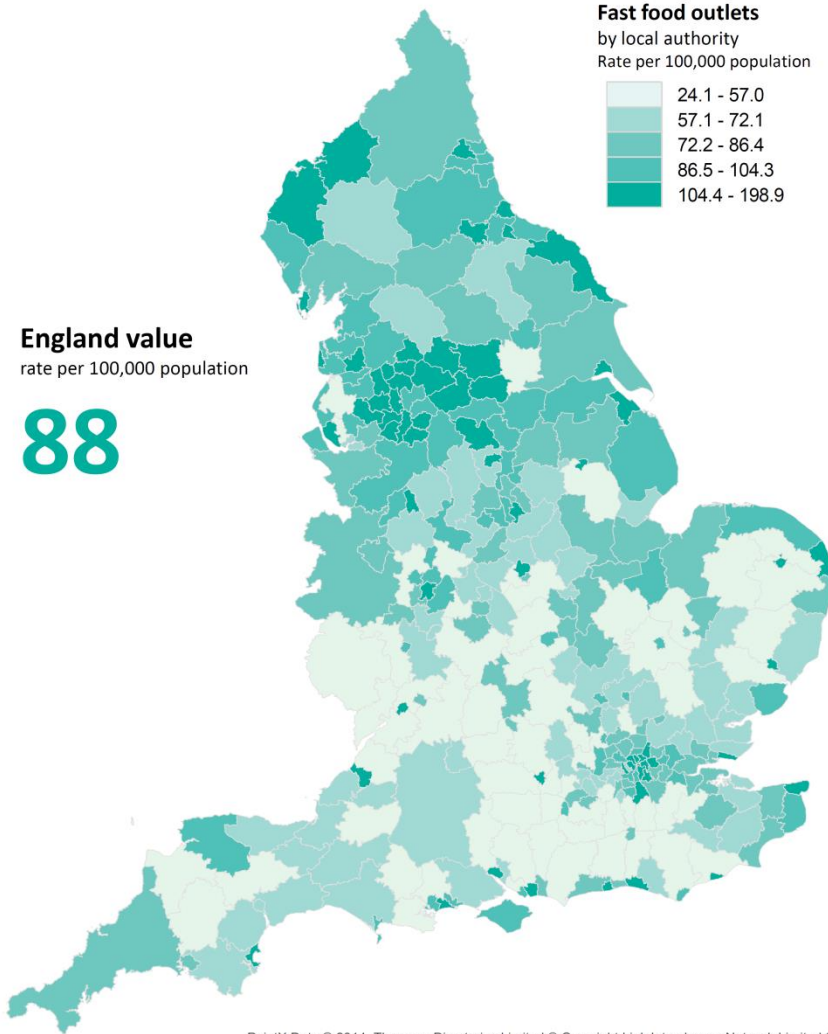




## Obesity and the environment

### Density of fast food outlets



PointX Data © 2014, Thomson Directories Limited © Copyright Link Interchange Network Limited © Database/Copyright and Ordnance Survey © Crown copyright and/or Database Right 2006. All rights reserved. Licence number 10034829

## Fast food map

The map shows density of fast food outlets per 100,000 population at local authority level.

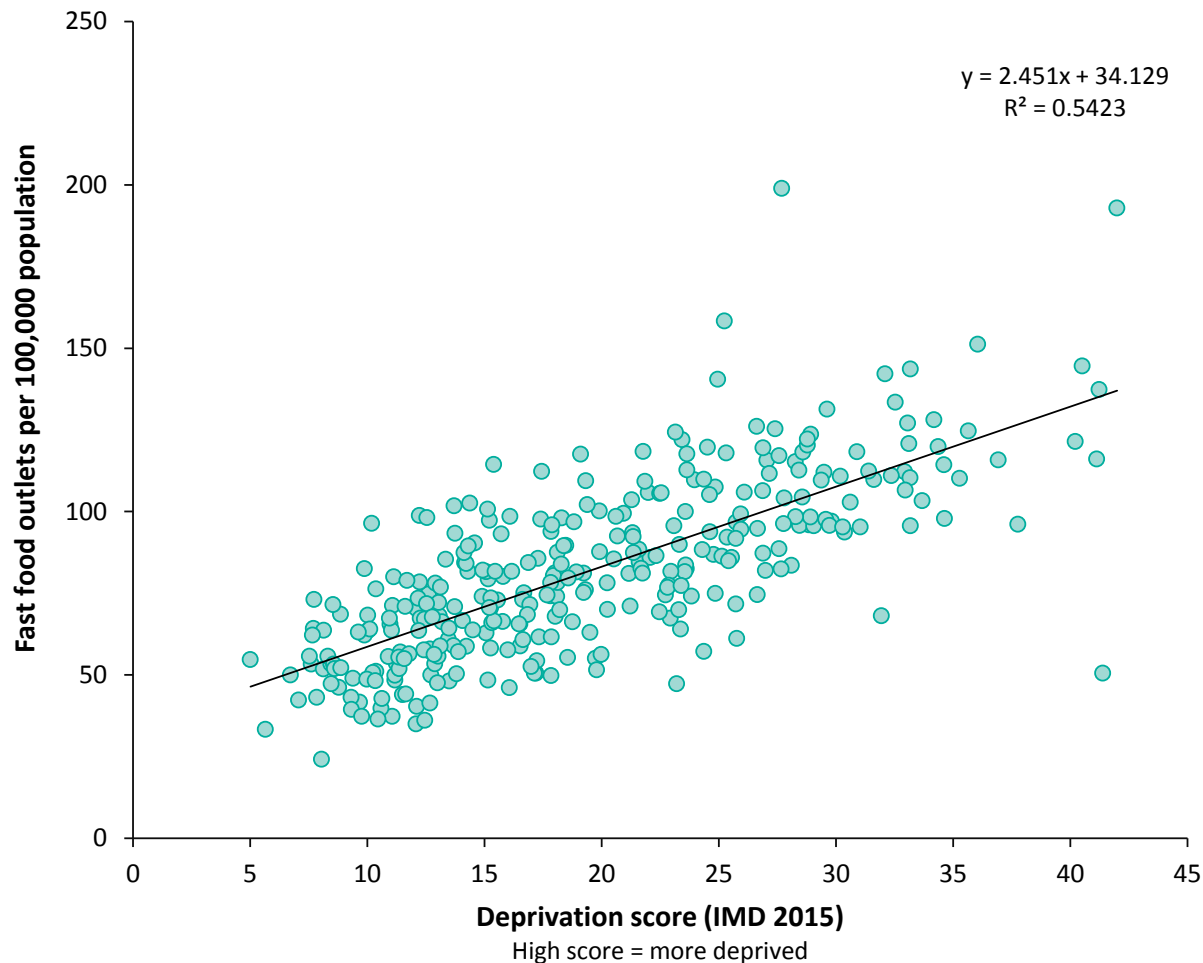
PHE has published this map alongside an Excel file with local authority and ward level counts of fast food outlets.

Data source: Ordnance Survey Points of Interest

Find the map and data on [www.noo.org.uk](http://www.noo.org.uk)

# Density of fast food outlets and deprivation

by local authority



This chart illustrates the association between density of fast food outlets and area level deprivation.

The local authorities with a higher deprivation score (i.e. more deprived) have a greater density of fast food outlets.

Evidence from health survey data shows that the prevalence of overweight and obesity also rises with deprivation and fruit and vegetable consumption falls with deprivation.